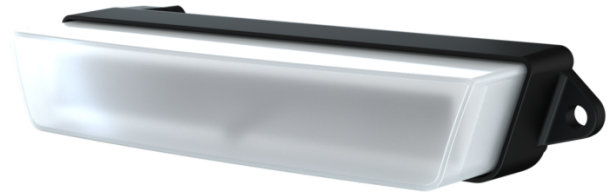


CUE

The CUE is a cool front signal light giving you the design freedom you need. All set for future demands, this front light combines a daytime running light, position light and direction indicator into a sleek package with a soft, even light. CUE's ingenious optical design combined with the cleverly calculated cooling system makes it the world's first signal light suitable for mounting at any vertical angle. Look stylish and remain visible on and off the road with the ECE-approved CUE.



Not all products are available in all markets. During continuous improvement specifications and design are changing. All values are nominal values. Illustrations do not necessarily show the design of every version and some features are version specific. The lumens output varies depending on lens colour.

TECHNICAL DATA

Nominal Voltage DC	24 V	Body / Housing	Aluminium
Input Voltage DC	18 - 32 V	Weight	0.5 kg
Power Consumption	DRL 11W, Position Light 2W, Direction Indicator 15W	IP Rating	IP68, IP6K9K
Nominal Current at	DRL 0.45A, Position Light 0.06A, Direction Indicator 0.6A	Salt Spray Test	ISO 9227 240H
Connector	Built-in Deutsch DT-4 (4-pin)	EMC	CISPR 25 Class 5, ISO 13766, ISO 14982-2, ISO 7637-2, ISO 10605, ISO 11452, EN 61000-4-2, EN 13309
Mount	2 pcs M8 screw	ECE Approvals	Module: ECE R10, Daytime Running Light: ECE R87, Position Light: ECE R7, Direction Indicator: ECE R6 Class 1b
Shock	60G	Operating Temperatures	-40°C... +85°C (Full Power) -40°C... +50°C
Vibration	9.8Grms 24-1000Hz	Electronics	Isolated
Lens	PC (diffused)	Part Numbers	983-201B

CONNECTORS



Built-in Deutsch DT-4 (4-pin)

KEY FEATURES

- 3-in-1 solution
- 360° vertical mounting
- ECE-approved

DRAWINGS

